



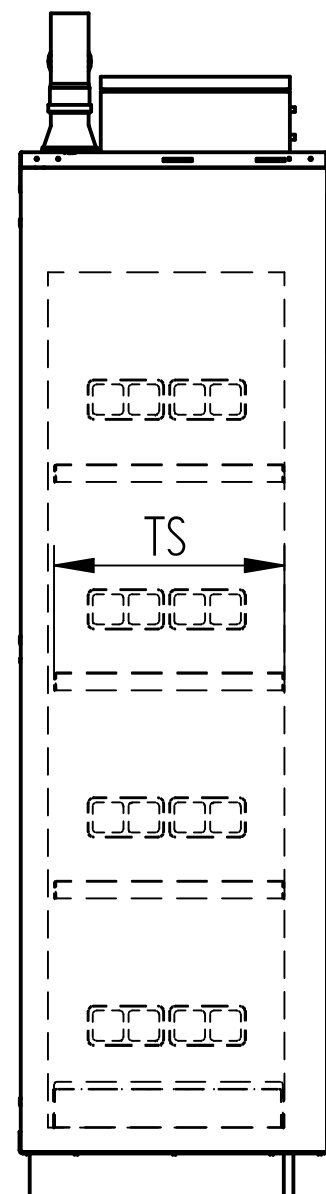
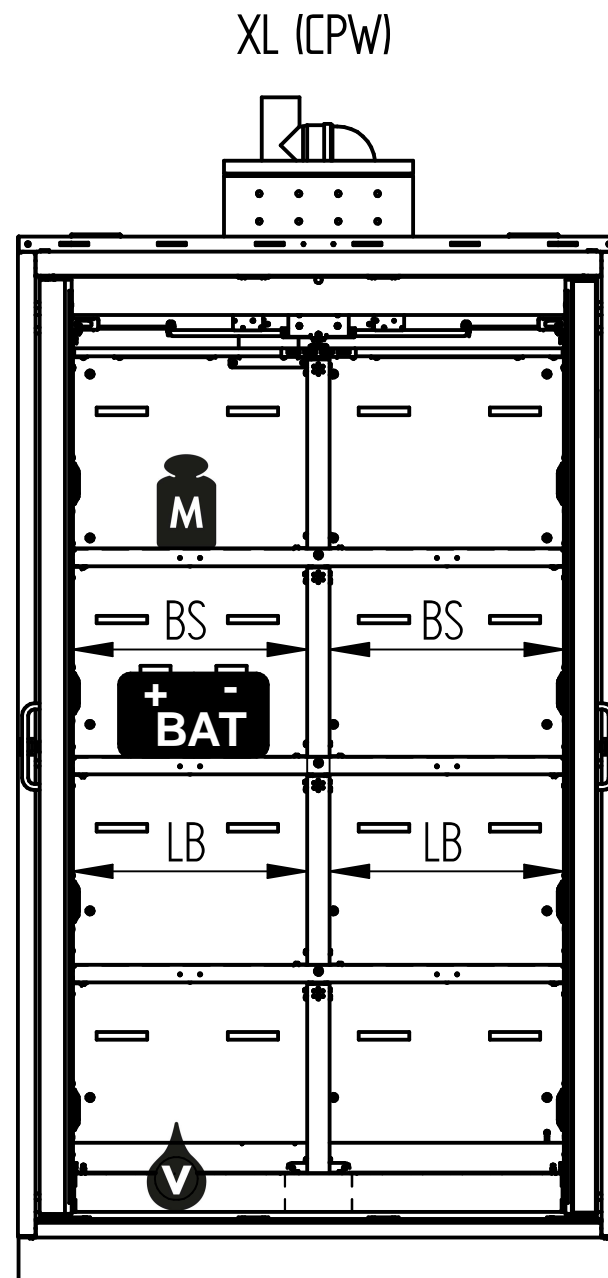
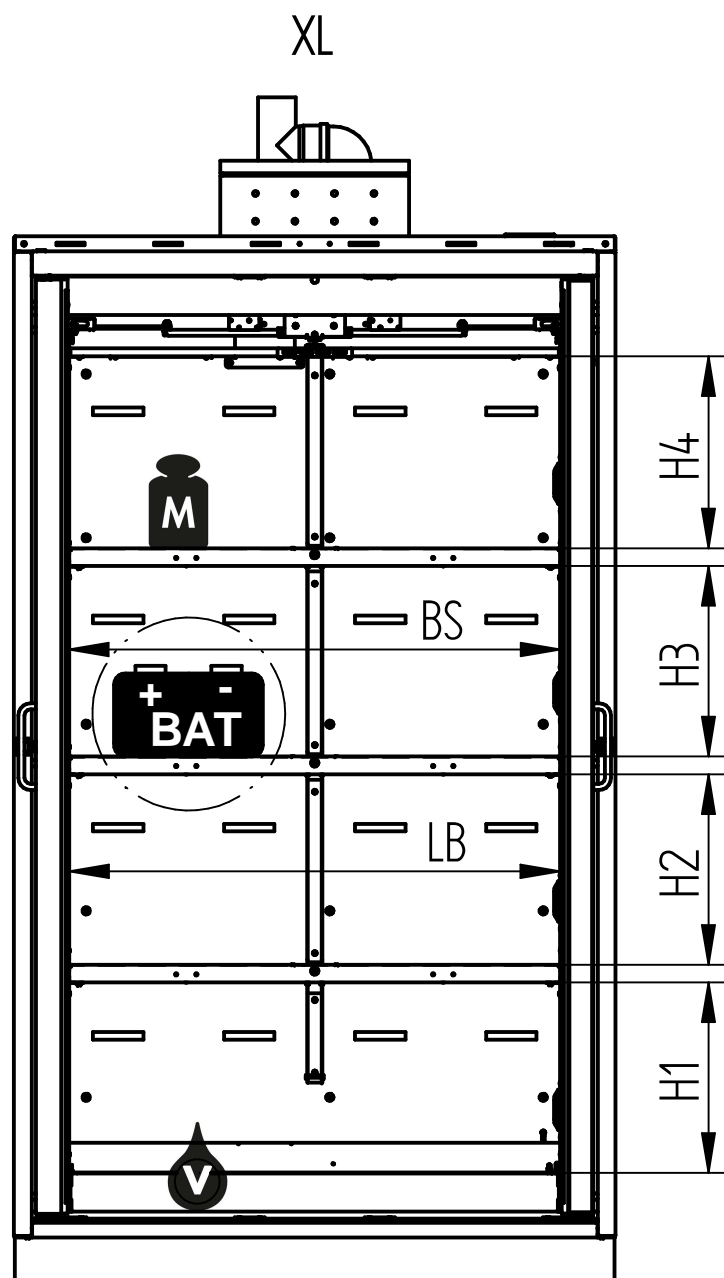
	Model type				
	S	M	L	XL	XL (CPW)
H (mm)	1385	2045	2045	2045	2045
B (mm)	594	594	894	1194	1194
T (mm)	612	612	612	612	612
T1 (mm)	1100	1100	990	1140	1140
Doors	1	1	2	2	2
Tare weight (kg)	230	320	410	540	550
Inside cabinet volume (m <sup>3</sup> )	0,28	0,43	0,69	0,95	0,95

Electrical data connection	Model type
	S, M, L, XL, XL (CPW)
Power supply	230 V ~ 50/60 Hz
Fuse protection	16 A
Plug type	type F (CEE 7/4)

CPW: Centre partition wall

Outer dimensions

This drawing is our property! Furnish this information to other persons and reproduce or copy is not permitted without our written permission.	title: Safety cabinet type 90 BATTERY station		
	drawing no: D00104984	page: 1 of 4	
Düperthal Sicherheitstechnik Frankenstrasse 3 D-63791 Karlstein	revision: 01	date: 2020-03-18	

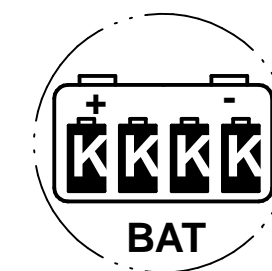


	Model type				
	S	M	L	XL	XL (CPW)
BS (mm)	375	375	675	975	2x 465
TS (mm)	457	457	457	457	457
M (kg)	75	75	75	75	75
Max. load capacity (kg)	240	360	360	360	360
V (l)	11	11	22	33	33
LB (mm)	374	374	674	974	2x 464
K (Ah)	54	54	54	54	54
Number of storage levels	3	4	4	4	4
Number of storage areas	3	4	4	4	8

BS: Width storage area  
 TS: Depth storage area  
 M: Load bearing capacity per storage level (uniformly distributed)  
 V: Max. collection volume  
 LB: Clear width  
 CPW: Centre partition wall  
 BAT: Battery - may consist of several lithium-ion cells (K)  
 K: Max. capacity of the largest single lithium-ion cell

Max. setting height (mm)			
		Model type	
		S	M, L, XL, XL (CPW)
Storage levels	H1	297	378
	H2	297	378
	H3	---	378
	H4	299	381

Electrical data supply	Model type
	S, M, L, XL, XL (CPW)
Power supply	230 V ~ 50/60 Hz
Fuse protection per storage area	10 A
Number of sockets per storage area	4
Sockets for plug type	type C (CEE 7/16) type C (CEE 7/17) type F (CEE 7/4) type E+F (CEE 7/7)



Inner dimensions

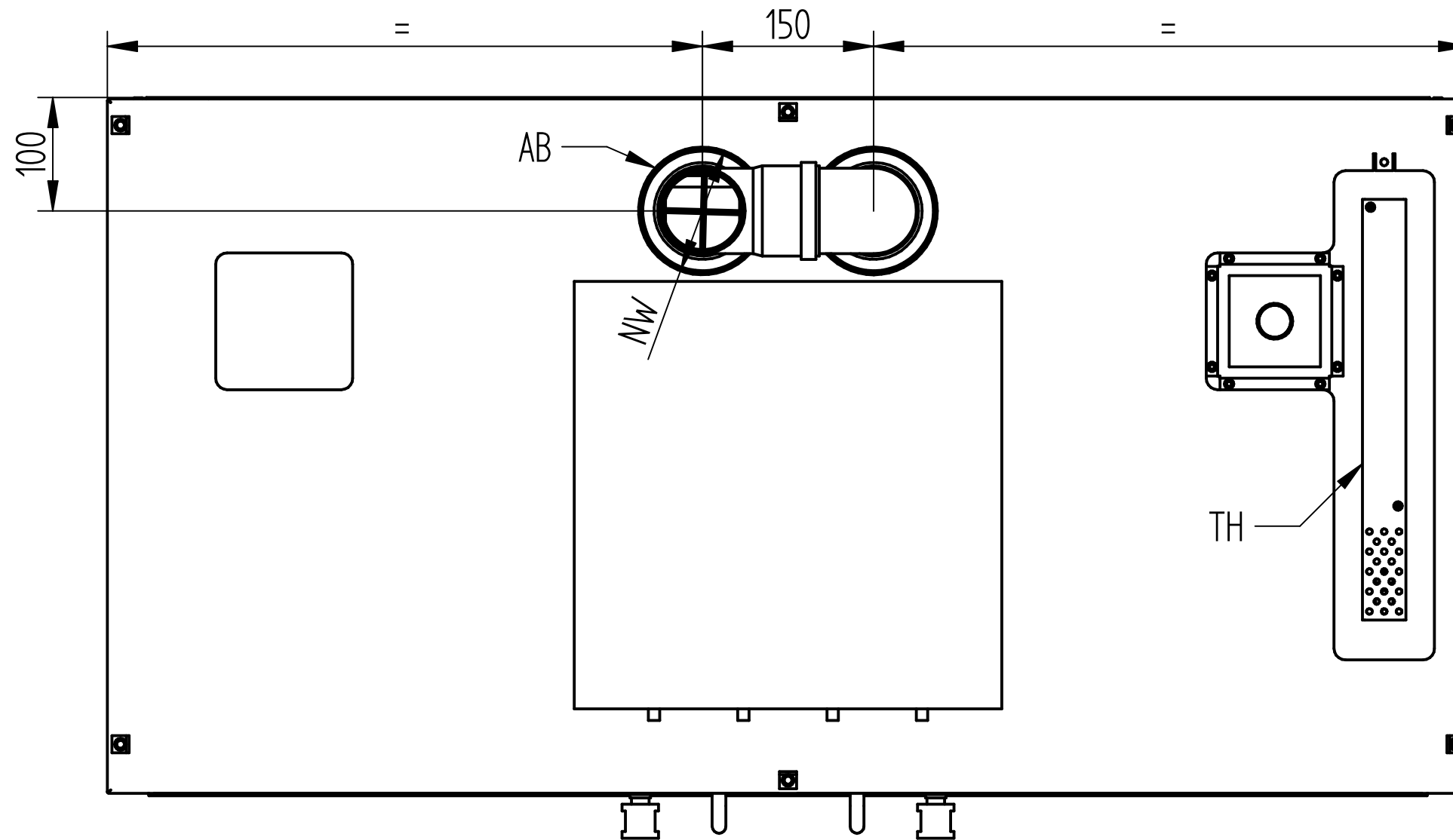
This drawing is our property! Furnish this information to other persons and reproduce or copy is not permitted without our written permission.

title: Safety cabinet type 90 BATTERY station

drawing no: D00104984 page: 2 of 4

revision: 01 date: 2020-03-18

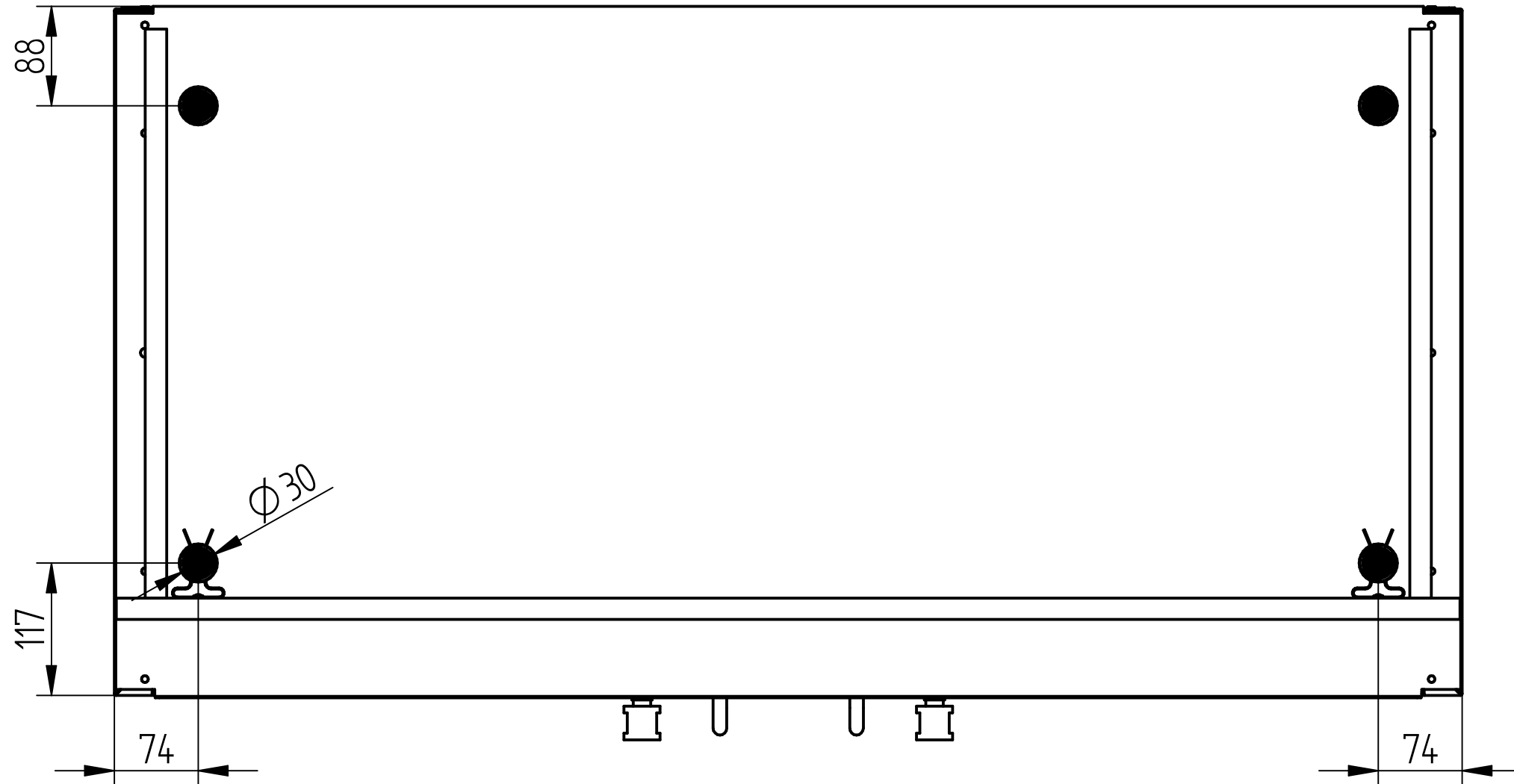
Düperthal Sicherheitstechnik  
 Frankenstrasse 3  
 D-63791 Karlstein



NW: 110, with adapter 75  
 AB: Exhaust air connection  
 TH: Thermocouple

### Ventilation connection

This drawing is our property! Furnish this information to other persons and reproduce or copy is not permitted without our written permission.	title: Safety cabinet type 90 BATTERY station		
	drawing no: 000104984	page: 3 of 4	
Düperthal Sicherheitstechnik Frankenstrasse 3 D-63791 Karlstein	revision: 01	date: 2020-03-18	



● Loaded footprint

### Geometry of the adjustable feet

This drawing is our property! Furnish this information to other persons and reproduce or copy is not permitted without our written permission.	title: Safety cabinet type 90 BATTERY station		
	drawing no.: 000104984	page: 4 of 4	
Düperthal Sicherheitstechnik Frankenstrasse 3 D-63791 Karlstein	revision: 01	date: 2020-03-18	